

## China Supplier Formwork System Accessories Hot DIP Galvanized Construction Building Material Steel Planks

Our Product Introduction

for more products please visit us on [bythaiscaffold.com](http://bythaiscaffold.com)

### Basic Information

- Place of Origin: China
- Brand Name: Bythai
- Model Number: BM205
- Minimum Order Quantity: 1000
- Price: 4.5-8.5
- Packaging Details: In bundles
- Delivery Time: 10-15
- Payment Terms: container, shipping



### Product Specification

- Packaging: Container
- Place Of Shipment: China
- Usage: Scaffolding
- Material: Steel
- Surface: Pre-galvanized/hot Dip Galvanized/Spray Plastic
- Length: Customized
- Highlight: **Hot DIP Galvanized Steel planks, Formwork System Accessories Steel planks, Construction Building Material Steel Planks**



### More Images



### Product Description:

Each steel plank ringlock is meticulously crafted using superior grade steel, a material known for its remarkable strength and durability. The steel used in these planks is designed to withstand the rigors of heavy use in various environmental conditions, which is essential for the demanding nature of construction work. The resilience of steel also means these planks offer a long service life, reducing the need for frequent replacements and thus contributing to cost savings over time.

In considering the diverse applications and the sometimes harsh conditions encountered on construction sites, the Scaffolding Plank comes with various surface treatment options to enhance its performance. Clients can choose from pre-galvanized, hot dip galvanized, or spray plastic surfaces, depending on their specific needs. Pre-galvanized surfaces offer a decent level of protection against corrosion, while hot dip galvanized treatment provides a thicker, more robust coating that is ideal for extreme environments. The spray plastic option delivers an additional layer of durability and can be customized in color, which can be useful for identification or aesthetic purposes.

The versatility of the steel plank ringlock is evident in its wide range of usage in scaffolding systems. These planks are designed to integrate seamlessly with ringlock scaffolding, a popular and highly adaptable system known for its ease of assembly and flexibility. The compatibility of the steel plank with ringlock systems makes it a convenient choice for contractors and construction firms looking to streamline their operations with interoperable components.

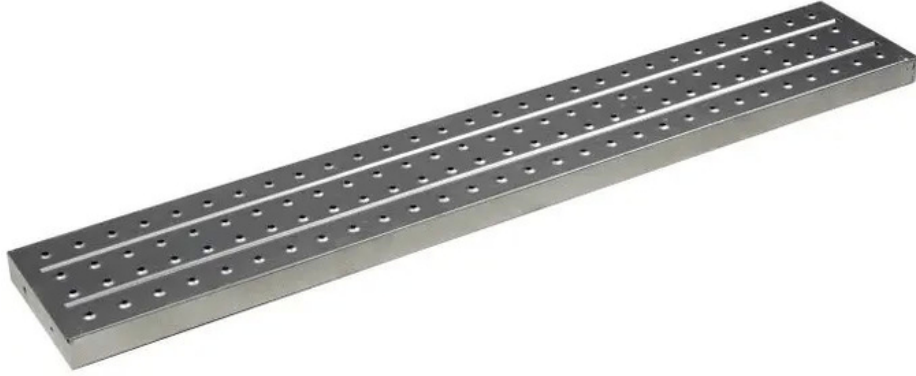
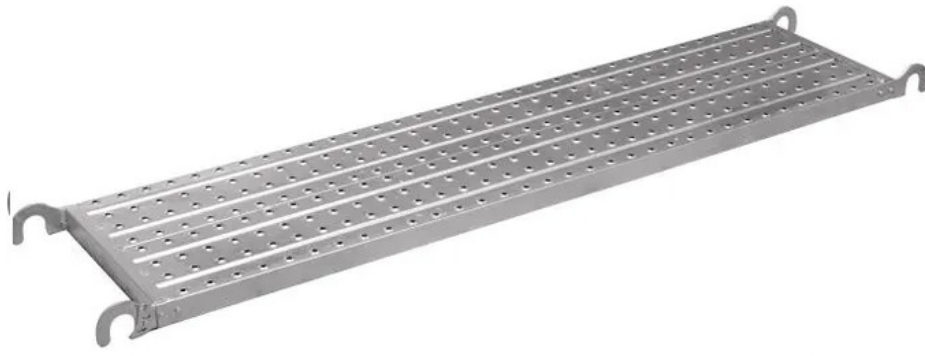
When it comes to packaging and shipping, the Scaffolding Plank is carefully loaded into containers, ensuring that it arrives at its destination in pristine condition. The container packaging not only protects the planks during transit but also allows for efficient handling and storage upon arrival. The strategic location of the shipment facility in China allows for convenient access to international shipping routes, ensuring timely delivery to global clients.

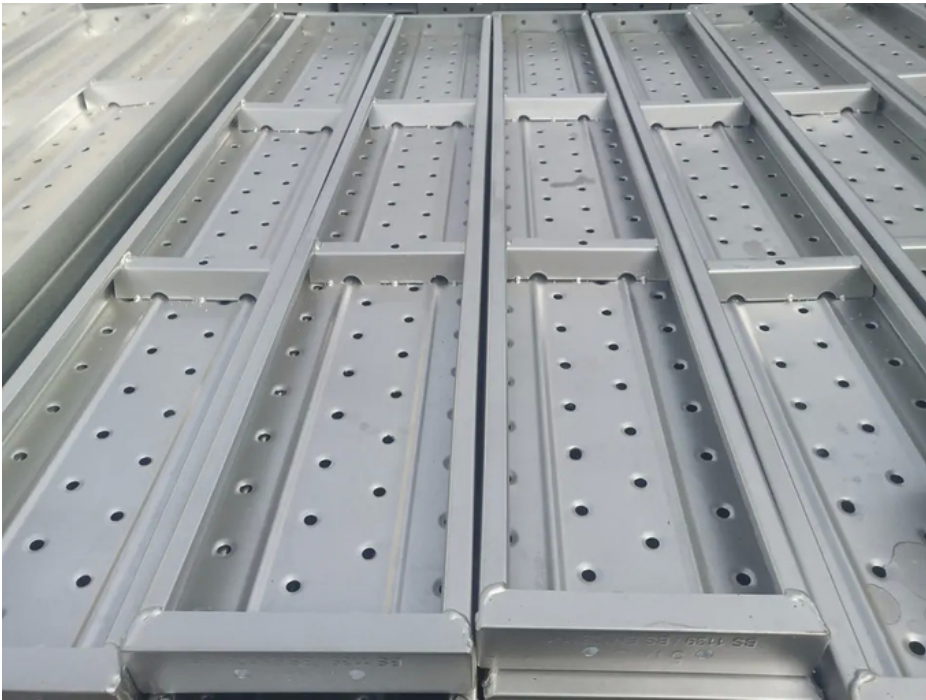
The steel plank ringlock is a symbol of innovation and reliability in the construction industry. Its design is a result of extensive research and development, with an emphasis on safety and user-friendliness. The plank features a non-slip surface, providing a secure footing for workers and helping to prevent accidents. The edges of the planks are also designed to interlock securely with the ringlock system, further enhancing stability and safety.

In conclusion, the Scaffolding Plank is an essential product for any construction project, offering unparalleled strength, durability, and versatility. Made from high-quality steel and available with various surface treatments, it is designed to meet the demanding needs of the construction industry. Packaged securely and shipped from China, these steel plank ringlock components are ready to support the successful completion of construction projects worldwide. With the Scaffolding Plank, contractors and builders can proceed with confidence, knowing they have a reliable platform for their work.

### Technical Parameters:

Parameter	Specification
Place of Shipment	China
Packaging	Container
Material	Steel
Length	Customized
Surface	Pre-galvanized/Hot Dip Galvanized/Spray Plastic
Usage	Scaffolding
Product Keywords	Steel Plank 230, Steel Plank with Hook, Perforated Steel Plank for Sale





### **Packing and Shipping:**

The bundle is finally placed on a heavy-duty wooden pallet, which is shrink-wrapped to ensure stability and prevent movement of the planks. Appropriate labeling indicating the quantity, size, and handling instructions is affixed to each pallet for inventory and transport purposes.

#### **Shipping for Scaffolding Plank:**

Our scaffolding planks are shipped via commercial freight carriers to ensure timely and safe delivery. Before shipment, all pallets are inspected to confirm they meet our stringent shipping standards. Carriers are selected based on their proven track record for handling construction materials and their ability to deliver to the specific destination. Upon dispatch, tracking information is provided to the customer to monitor the shipment's progress. We advise customers to inspect the planks upon arrival and report any discrepancies or damages immediately for resolution.



**Bythai Scaffolding Co.,Ltd**



17300780862



info@bythaiscaffolding.com



bythaiscaffold.com

No. 605,Industrail Exchange Center ,Huanghua Town Changsha Hunan China