

## Factory Price Used Scaffolding System Frame for Construction Concrete Supporting

Our Product Introduction

for more products please visit us on [bythaiscaffold.com](http://bythaiscaffold.com)

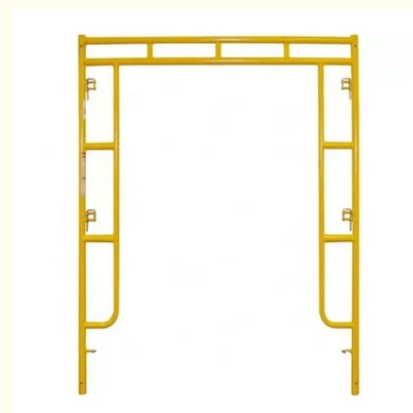
### Basic Information

- Place of Origin: China
- Brand Name: Bythai
- Certification: SGS ISO
- Model Number: BT205
- Minimum Order Quantity: 1000
- Price: 10.5-35.5
- Packaging Details: In bundles
- Delivery Time: 10-15
- Payment Terms: TT/TC

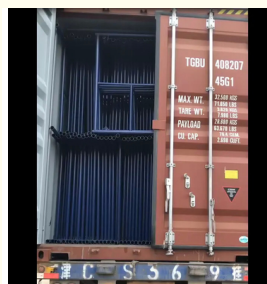
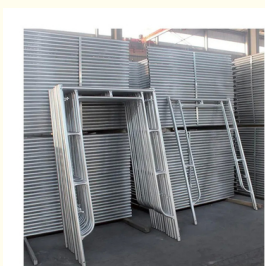


### Product Specification

- Color: Steel/Spray Plastic
- Material: Q235
- Load Capacity: High
- Size: Customized
- Arrival Time: 10-15
- Shipping Origin: China
- Highlight: **Construction Scaffolding System Frame,  
Construction Concrete Supporting Scaffolding  
System Frame**  
,  
**Concrete Supporting Scaffolding System Frame**



### More Images



## Product Description

### Product Description:

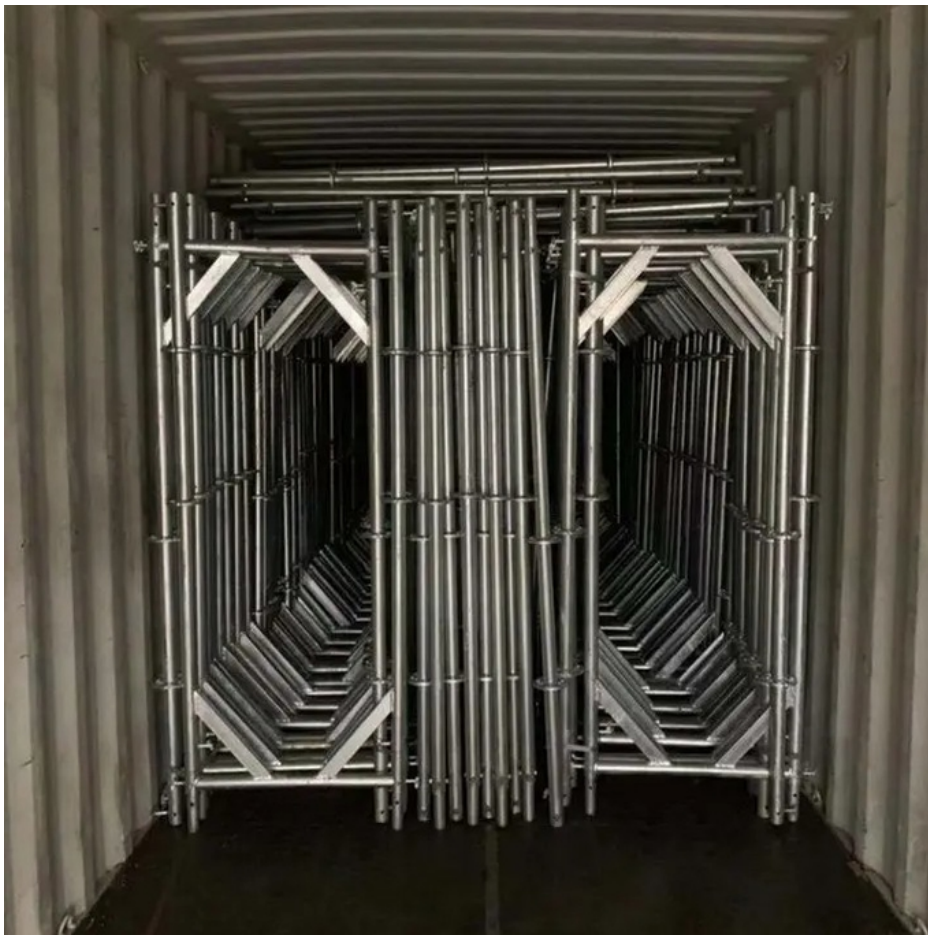
The Frame System Scaffolding, specifically designed with the robust Q235 material, is an innovative solution for construction and building maintenance projects. Meticulously engineered to meet the highest standards of safety and efficiency, this system is an exemplary choice for those who seek reliability and durability in their scaffolding needs. The Q235 material, known for its high tensile strength and resilience, ensures that the Frame System Scaffolding can withstand the rigors of heavy use in various construction environments.

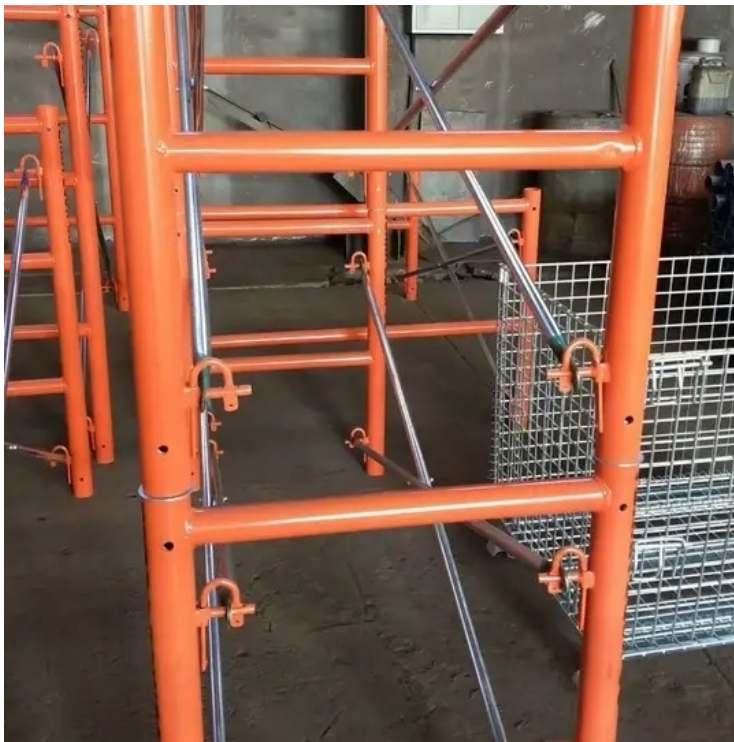
Conclusively, the Frame System Scaffolding is a superior choice for any construction or maintenance project. With its use of high-quality Q235 material, customizable size, high load capacity, quick arrival time, and appealing color options, it stands out as a leading scaffolding frame system in the industry. Its h frame design simplifies the construction process and enhances safety, making it an indispensable asset for efficient and secure operations on any job site.

### Technical Parameters:

Parameter	Specification
Size	Customized
Color	Steel/Spray Plastic
Material	Q235
Arrival Time	10-15 days
Shipping Origin	China
Load Capacity	High
Scaffold Type	Ladder Frame, Portal Frame Scaffold Erection, Portal Frame Shoring System







### **Packing and Shipping:**

The Frame System Scaffolding is meticulously packaged to ensure its protection during transit. Each component is securely wrapped with protective materials and placed within sturdy, corrugated packaging designed to withstand the rigors of shipping. The packaging is also clearly labeled with handling instructions and product information to facilitate proper transportation and identification upon arrival. For shipping, the Frame System Scaffolding is palletized and securely strapped to maintain stability. The pallets are then loaded onto freight vehicles using appropriate equipment and methods to prevent any movement that could cause damage. We employ reliable shipping services with tracking capabilities to ensure that your scaffolding system arrives on time and in perfect condition.



**Bythai Scaffolding Co.,Ltd**



17300780862



info@bythaiscaffolding.com



bythaiscaffold.com

No. 605,Industrail Exchange Center ,Huanghua Town Changsha Hunan China