

## Industrial Scaffold Coupler System Designed For Industrial Efficiency

Our Product Introduction

for more products please visit us on [bythaiscaffold.com](http://bythaiscaffold.com)

### Basic Information

- Place of Origin: Tianjin China
- Brand Name: Bythai
- Certification: SGS ISO
- Model Number: BT203
- Minimum Order Quantity: 1000
- Price: 10.8-85.5
- Packaging Details: In bundles
- Delivery Time: 10-15
- Payment Terms: TT/TC



### Product Specification

- Product Name: Ringlock System
- Warranty: 2 Years
- Application: Building
- Design Style: Industrial
- Shipping Origin: China
- Surface Treatment: Hot-dip Galvanized
- Application Scenarios: Architecture
- Highlight: **Efficiency Scaffold Coupler System,  
Industrial Scaffold Coupler System,  
Industrial Efficiency Scaffold Coupler System**



### More Images



## Product Description

### Product Description:

The Corrosion-Resistant Ringlock is a hot-dip galvanized scaffolding system that is made to withstand harsh weather conditions and extreme temperatures. The hot-dip galvanizing process provides a protective coating that helps prevent rust and corrosion, making it suitable for use in areas prone to moisture and saltwater exposure. The Ringlock System Scaffolding is designed to be lightweight, easy to install, and disassemble, making it an excellent choice for various construction projects.

As a product originating from China, the Ringlock System Scaffolding is manufactured to meet international standards and has been tested and certified for safety and quality. Its industrial design style offers a modern and sleek appearance, ideal for construction sites that require a professional look. The scaffolding system is ideal for applications such as building maintenance, bricklaying, painting, plastering, and more.

In summary, the Ringlock System Scaffolding is a reliable and durable industrial style scaffolding system designed to cater to building construction requirements. Its secure scaffolding joints, steel ringlock scaffolding, and corrosion-resistant ringlock properties make it a popular choice for various construction projects. If you are looking for a scaffolding system that offers safety, reliability, and ease of use, then the Ringlock System Scaffolding is an excellent choice.

### Features:

Product Name: Ringlock System Scaffolding

Application: Building

Design Style: Industrial

Material: Q235 Steel

Application Scenarios: Architecture

Place of Origin: Tianjin China

Features:

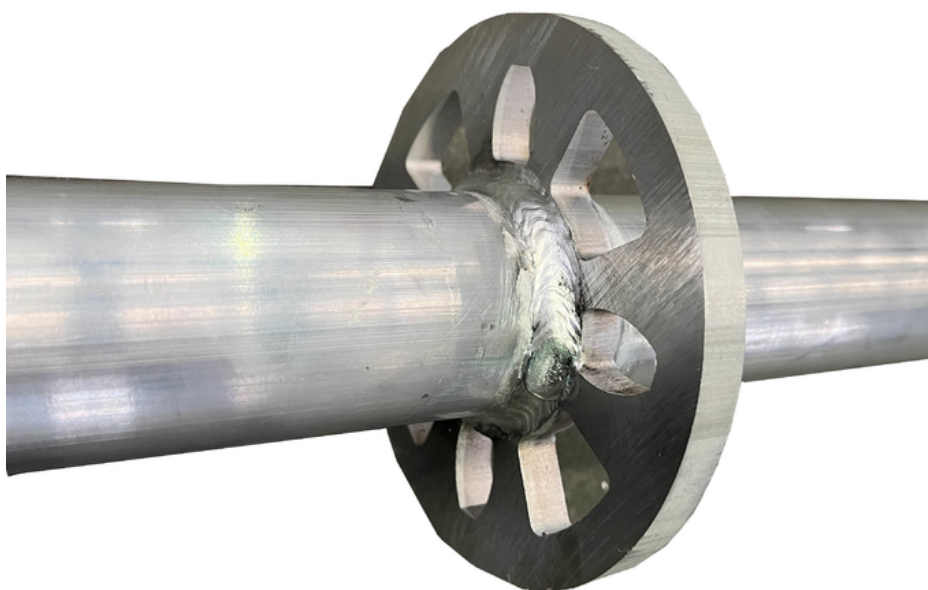
Scaffold Coupler System for maximum stability and safety

Easy Installation Scaffold System for quick assembly and disassembly

Ringlock Scaffold Connector for easy and secure connection of components

### Technical Parameters:

Design Style	Industrial
Application	Building
Warranty	2 Years
Shipping origin	China
Place of Origin	Tianjin China
Application scenarios	Architecture
Surface Treatment	Hot-dip Galvanized
Product name	Ringlock System
Material	Q235 Steel



**Bythai Scaffolding Co.,Ltd**



17300780862



info@bythaiscaffolding.com



bythaiscaffold.com

No. 605,Industrail Exchange Center ,Huanghua Town Changsha Hunan China